

Stroll MAP



Shop, eat, experience,
and enjoy the heart
of Asahikawa!

In Hokkaido, Asahikawa City, along the permanently pedestrianized road 'Shopping Park' that stretches about 1 kilometer from JR Asahikawa Station, immerse yourself in traditional Japanese culture!

The experience programs are primarily conducted in Japanese. Please enjoy communicating in Japanese.

A Simple Kimono Wearing and Tea Ceremony Experience



The history and charm of kimonos, explained by the owner of a long-established kimono shop. After choosing and trying on your favorite kimono, you can have a commemorative photo taken in the store, and receive the data as a gift. Furthermore, you can also experience the tea ceremony, one of Japan's traditional cultures. By experiencing the aesthetic beauty that has been nurtured since ancient times, you can gain a deeper understanding of Japanese culture.

- From 6,900 yen ● Required time / About 2 hours
- Reservation Deadline / Up to 12:00 PM, 7 days before the experience day
- ※Reservations cannot be made for individuals. Please apply with two or more persons.

Daigen Meguro Kimono Shop, 8F Yoshitake Park Building, 3 Jo-Dori 7 Chome, Asahikawa City



Map showing various shops and facilities along Asahikawa Heiwa-dori Kaimono-koen, from JR Asahikawa Station to 8-jo Hon-dori.

1-jo Hon-dori

- Hotel Wing International Asahikawa Station
- Cafe Yoshinori Coffee Asahikawa Ekimae (1F)
- Hair and beauty salon, izakaya, convenience store, food and drink, medical care Meijiya Building
- Cafe Dining Sweets Parking Lot A.s.h.
- Yakiniku Yakiniku Wajima
- Beauty Salon mod's hair (2F)
- Gyoza Choinomi Gyoza Pub Yawora
- Shoes Micky Shoe Store

2-jo Hon-dori

- Large commercial facility Aeon Mall Asahikawa Station
- Cafe & Bar machibar
- Hats My Pokke Hat Specialty Store
- Semi-Order Made Suits BRITALIAE (1F)
- Retro Pub New Castle
- Craft Beer HUG

3-jo Hon-dori

- Donuts Mister Donut Asahikawa 2-Jo Shop (1F)
- Coworking Space Attic cafe (2F)
- Kimono Kimono no Hirama (2F)
- Art and Craft Store Baihoudou
- Ramen Yokohama-style Ramen Takedaya
- Hearing Aid Ha-I Asahikawa
- Beauty, Health, Entertainment, Relaxation Apesu Building

4-jo Hon-dori

- Drugstore Tsuruha Drug Asahikawa Chuo Store (1F)
- Japanese & Western Sweets Tsuboya Toki no Mori (1F)
- Large Commercial Facility Feeeel Asahikawa
- Ramen Baikoken Honten (B1F)
- Dining & Izakaya Sasaki Building
- Leather Goods, Bags & Shoes RUBAN (1F)
- Italian ENOTECA IL GENTILE (1F)
- Dining & Beauty AYLIT BUILD
- Glasses Nakasato Glasses
- Izakaya Abrino Kita-no Sumibiyaki, Jumbo Yakitori

From Miyashita Street to 4-Jo Hon-dori

- Orange stores on the MAP are eateries

B Asahikawa Self-Photo Studio (Ni.8 SelfStudio)

A photo studio where you can take pictures by yourself using professional equipment. You can take photos in a more casual and fun way than in a photo studio, using various props and your favorite poses and expressions. Why not have fun taking commemorative photos with friends and family and create wonderful memories?

- Use by 1 person / 15-minute shooting 1,650 yen
- Reservations are accepted from 2 weeks in advance.
- ※Each reservation can accommodate up to 5 people. For details, please check the 2D barcode on the right.

Reservation Website Instagram

Kato Camera Store Ltd., 2 Jo-Dori 8 Chome 222-1, Asahikawa City, Tel: 0166-26-5521

C Hand-Sewn Cotton Coasters (Starting from April 2024)

Cotton coasters that can be easily made by hand sewing. Suitable for beginners. Great as gifts. Let's have fun making them while chatting!

- ※You can also make eraser stamps. Why not try making a stamp with your name?

Cotton Coasters ● From 500 yen ● Required time / About 2 hours
Eraser Stamps ● From 500 yen ● Required time / About 2 hours
※Please inquire in advance for both.

Kimono no Hirama, 2nd Floor Heiwa Building, 2 Jo-Dori 8 Chome, Asahikawa City, Tel: 0166-23-5296
Reception / 14:00-18:00 (Closed on Sundays and Tuesdays)





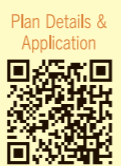
D Cheese Making + Souvenir



A workshop for completely handmade natural cheese using ingredients from Hokkaido. Enjoy the "taste" and "time" that only cheese artisans can experience. The process of milk solidifying is a precious feeling like cherishing a newborn baby. A special experience eating cheese not available in the market. ★Purchase of an experiential catalog gift is necessary.

- Required time / About 1 hour
- Reservation deadline / Up to 7 days before the experience day
- Number of participants / 1 group

Japachese Asahikawa 7-jo-dori 7-chome 33-69, Asahikawa City



E Dorayaki Making Experience



Using a scale to adjust exactly to 100g is truly a craftsman's skill. Moreover, you will be mesmerized by the quick and meticulous handiwork as each piece is carefully finished. The red bean paste is homemade, using locally produced azuki beans and sugar. The freshly made dorayaki is exceptionally fragrant and delicious. ★Purchase of an experiential catalog gift is necessary.

- Required time / About 30 minutes
- Reservation deadline / Up to 7 days before the experience
- Number of participants / Up to 3 people

Sweets Nichirin, 8-Jodori 7-Chome Right 10, Asahikawa City



F Popular good luck spot! Prayer & Inner Shrine tour at Kamikawa Shrine Tongu



At the Tongu Experience Meeting, prayers for travel safety and health are offered, and you receive valuable stories, words, and amulets from the Gon-negi. In addition to visiting the normally private Inner Shrine, you can also dress in traditional attire for a commemorative photo (regardless of gender). Recommended for those interested in Japanese shrines and history.

- From 7,600 yen
- Required time / About 1~1.5 hours
- Reservation deadline / Until 12:00, 14 days before the experience day
- ※ Individual reservations are not possible. Please apply with two or more people.

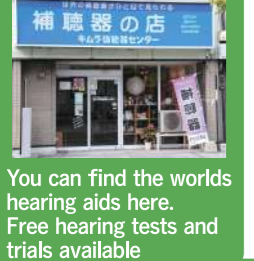
Kamikawa Shrine Tongu within Tokiwa Park, Asahikawa City



★If you wish to experience D,E,I., please purchase an experiential catalog gift in advance using the 2D barcode on the right and then apply.

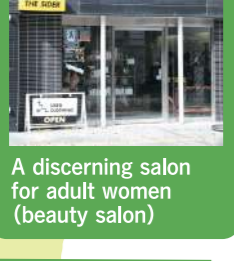


Hearing Aid Kimura Hearing Aid Center



You can find the worlds hearing aids here. Free hearing tests and trials available

Beauty Salon THE SIDER



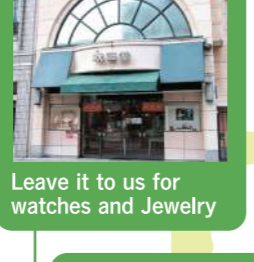
A discerning salon for adult women (beauty salon)

Jewelry Kiori



A long-established local Asahikawa specialty store that treasures every encounter and connection

Watches & Jewelry Akita-do



Leave it to us for watches and Jewelry

Asahikawa Food Terrace



- Asahikawa Downtown Exchange Hall Shop (2F)
- Bun Cafe (1F)
- Gojo Shokudo (1F)
- Sweets Shop CHIAKI (1F)
- BOOKMARK CAFE (1F)

Deli & Bento Shichifuku Bento Suzuki Shop (1F)



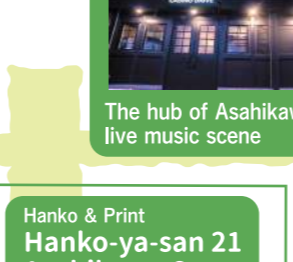
The famous bento with an endless queue

Produce Sato Greengrocer (1F)



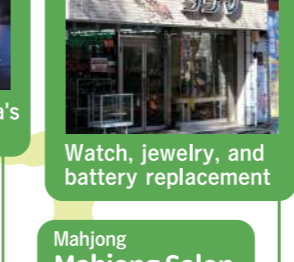
The town's greengrocer with fresh vegetables, fruits, and ingredients

Live House CASINO DRIVE



The hub of Asahikawa's live music scene

Watch Tajima Watch Store



Watch, jewelry, and battery replacement

Event & Community Space Machinaka Bunka Goya



A hub for community activities and exchange

Cheese Workshop Japachese Asahikawa



A workshop for completely handmade Hokkaido natural cheese!

Yakitori Warashibe



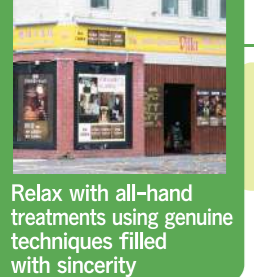
Yakitori shop for connoisseurs

Wagashi (Japanese Sweets) Sweets Nichirin



Please enjoy the traditional, additive-free, authentic mochi

Relaxation Asian Relaxation Villa Asahikawa 4 Jo Store



Relax with all-hand treatments using genuine techniques filled with sincerity

Sashimi & Japanese Cuisine Kuidokoro Suishin



The bluefin tuna sashimi is superb!

Beauty JOLI Kobayashi



A specialty store for top pieces, fashionable wigs, and hair extensions

Japanese Cuisine & Sake Manmaru Mahoro (1F)



A small eatery where you can enjoy casual drinks

Beauty Salon Yuria (2F)



Proposing easy-to-maintain hairstyles

Italian Osteria Canyon Base



The casual Italian cuisine with local ingredients is highly acclaimed!

Hanko & Print Hanko-ya-san 21 Asahikawa Store



Supporting new adults, new employees, and new business openings! Also offering flag and business card printing

Mahjong Mahjong Salon Yuuyu



Mahjong salon in the town center

Barber Shop Takahara Barber



Barber with 80 years of history

Gallery & Picture Books Gallery Purupuru / Kodomo Fukido



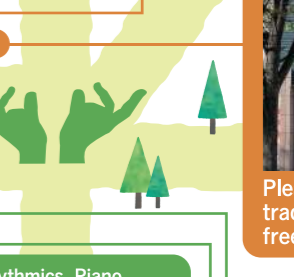
Hiroshi Abe's Picture Book Gallery & Children's Book Specialty Store

Shabu-shabu Shabu-shabu Benkei (1F)



The only lamb shabu specialty Restaurant in Asahikawa City

Shoes Shoe Shop Tokuno



Good Health begins with your feet!

Medical care Clinic of OZ



A psychiatric clinic by appointment only

Asahikawa Heiwa-dori Kaimono-koen



From 4-jo Hon-dori to 8-jo Hon-dori

Orange stores on the MAP are eateries

G Guided by the Liquor Store Owner! Tachinomi Experience with Delicious Local Sake in Asahikawa, the Town of Japanese Sake



A tour where you can select 3 types of your favorite local sake and create your own tasting set. With the store owner as your guide, just share your taste preferences, and they will suggest the perfect brands for you. They will also explain the brewer's commitments and history, making sake selection fun. Japanese cuisine appetizers, selected by the owner, are also provided.

- From 4,700 yen
- Required time / About 1 hour
- Reservation deadline / Until 12:00 the day before the experience



Japanese Sake Kakuuchi Uedayu 1st floor, Jujiya Building, 4-jo-dori 8-chome 1703-9, Asahikawa City

H Asahikawa Soybean Coffee Time! Soybean Coffee Roasting Experience



Why not experience roasting "Soybean Coffee" using Asahikawa-produced soybeans, satisfying for both coffee lovers and those concerned about caffeine, such as the elderly and pregnant women? The carefully roasted soybeans emit a fragrant aroma. Enjoy the amber soybean coffee's savory aroma and crisp taste, meticulously brewed through a flannel drip.

- From 6,400 yen
- Required time / About 1.5 hours
- Reservation deadline / Until 12:00, 7 days before the experience day
- ※ Individual reservations are not possible. Please apply with two or more people.



Harunire Cafe, 39-16, 8-chome, 7-jodori, Asahikawa City

I Making Asahiyama Zoo Animal Brooches with Wool Felt



Let's make brooches of Asahiyama Zoo animals with wool felt. Poke carefully with a needle made for felting. Bases are provided, so even beginners can easily participate. Choose from seals, penguins, bears, etc., according to difficulty level. Great for creating travel memories!

- Required time / About 3 hours
- Reservation deadline / Until 7 days before the experience day
- Number of participants / 1 person



MaitoParta, 7-jo-dori 8-chome 39-4, Asahikawa City

J Canvas Sacoche Making Experience "Come Empty-Handed!"



In the Sacoche Making Experience, under the guidance of a craftsman, you will go through all the processes of fabric bag production, from pattern making to sewing, using specialized tools. The material, canvas, was originally used for sails on sailing ships and is characterized by its thick and durable nature. Sacoche bags are lightweight and compact, perfect for carrying small items outdoors, such as hiking, camping, or summer festivals. Of course, you can take home the saccoche you make.

- 3,500 yen
- Required time / About 1~1.5 hours
- Reservation deadline / Until 12:00, 3 days before the experience day
- ※ One reservation can accommodate from 2 to a maximum of 5 people. The start time for the experience varies by day of the week. Please check the details from the 2D barcode provided.
- ※ In addition, there is also an experience for making canvas bags for liquor bottles, so please inquire.



Michihito, 1st Floor Eco Earth Building, 8-jo-dori 8-chome 41-8, Asahikawa City, Tel: 0166-86-0801